

FLNG HOOK-UP & COMMISSIONING

At the time of construction, this FLNG was the largest floating offshore facility ever built. During the hook up and commissioning (HuC) of the facility in 2018, significant hot works were planned. As Australia's leading pressurised habitat supplier, Safehouse was engaged to provide hot work and ignition source controls.

THE CHALLENGE

During the HuC phase of the project, LNG was imported onto the vessel, at which point the facility's hazardous area classifications came into effect. A busy schedule of construction punch-list items, HuC activities involving non-Ex equipment and rectification works posed significant hydrocarbon ignition risks.

OUR APPROACH

Project planning included Safehouse Project Engineer integration with the HuC team at the fabrication facility in Geoje, South Korea. A total of 111 habitat locations were surveyed, with 3D models, design drawings and work packs created for each.

Client project team integration continued in-field, with Safehouse habitat supervisors working with the project team and other disciplines to project manage the busy and ever-changing schedule offshore.

OUR SOLUTION

Safehouse supplied 5 large modular habitat systems complete with IECEx-certified ventilation, gas detection, power distribution and climate-control equipment. We provided training to over 60 contractor personnel to act as firewatch during hot work operations. Seven Safehouse technicians on a 24-hour schedule installed, managed, and maintained the habitats.

Safehouse designed and supplied four custom IECEx certified 125A power distribution boards to provide power to contractor temporary equipment.

Bespoke hatch cover habitats were also designed and supplied to maintain the integrity of the sub-structure non-hazardous area.

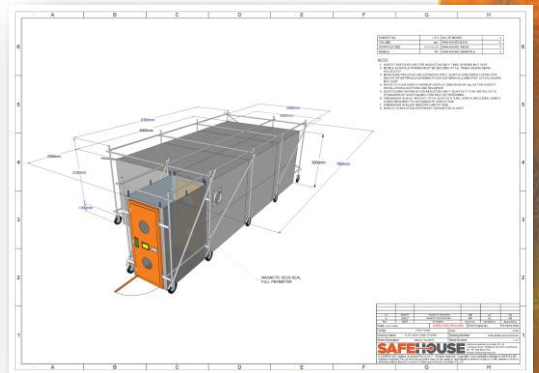
THE RESULTS

Safehouse installed and managed 96 pressurised habitats over an 8-month HuC period, completing a total 18500+ hours LTI free. The Safehouse project team integrated seamlessly with the client project team offshore and ensured the large-scale and complex works were completed on schedule.

CLIENT TESTIMONIAL

"Throughout the [facility name] hook up project, the Safehouse team demonstrated exceptional professionalism. During the planning phase, they exhibited remarkable adaptability and a strong commitment to conducting thorough project risk assessments, leading to innovative approaches for a project of this scale. Their expertise significantly contributed to the development of our construction and hot works schedule, drawing from their extensive experience from a hook up project a few months previous. The on-site technicians consistently adapted to ever changing schedules and evolving construction requirements. Their pressurised habitats provided us with safe, controlled workspaces in hazardous areas, allowing us to execute critical tasks without compromising safety and their ability to seamlessly navigate these changes ensured the successful completion of each task. Their experience underscored the pivotal role of seasoned professionals in managing a project of this magnitude. The Safehouse team's profound grasp of work scopes instilled in us a high level of confidence throughout the project, making their dedication and adaptability key factors in our success over the 8-month period. I would highly recommend Safehouse and their best-in-class equipment for any major hook up, shutdown or brownfields project in future."

Client SMP Supervisor



STATISTICS

96
PRESSURISED HABITATS
INSTALLED AND MANAGED

18500+
LABOUR HOURS

7
HABITAT TECHNICIANS
ONSITE

120+
PERMITS

0
LOST TIME INCIDENTS